

M860XX-C Series

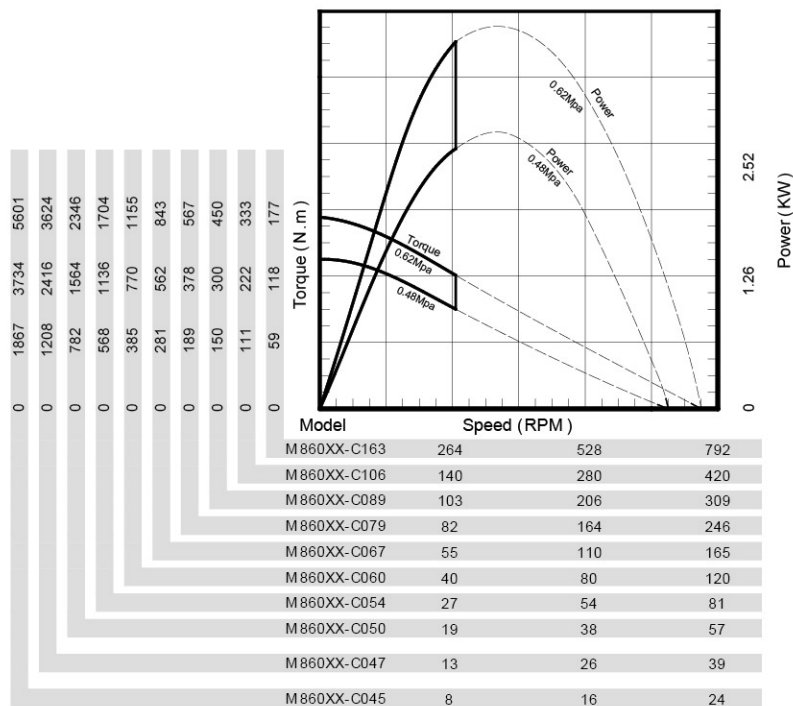
3.38KW/3.46KW



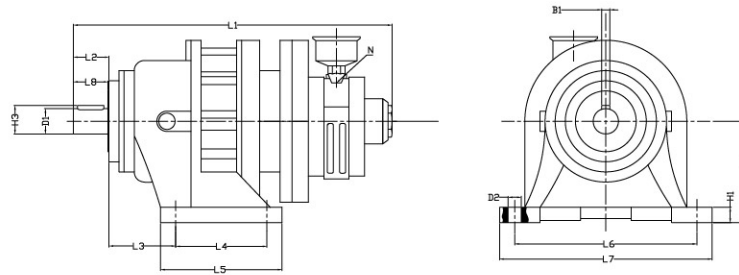
M860XX-C series specification

Model	Max Power (KW)	Speed at Max Power (RPM)	Free Speed (RPM)	Starting Torque(Nm)	Stall Torque (Nm))	Air Consumption (m³/m)	Weight(KG)
M860XX-C163	3.46	272	762	120	168	4.3	19.2
M860XX-C106	3.46	144	403	227	316	4.3	19.2
M860XX-C089	3.46	106	298	306	428	4.3	19.2
M860XX-C079	3.46	84	237	386	540	4.3	19.2
M860XX-C067	3.46	57	160	573	800	4.3	25.7
M860XX-C060	3.46	42	116	786	1098	4.3	37.2
M860XX-C054	3.46	28	79	1159	1620	4.3	37.2
M860XX-C050	3.38	20	56	1595	2229	4.3	74.2
M860XX-C047	3.38	13	36	2466	3445	4.3	74.2
M860XX-C045	3.38	8	23	3811	5324	4.3	120.7

Performance Curves

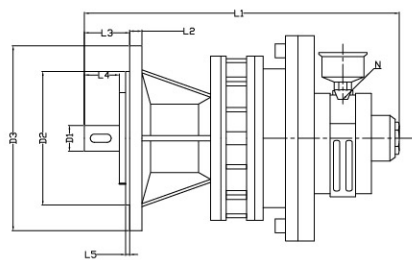


Dimension list – M860WX-C series horizontal mounts

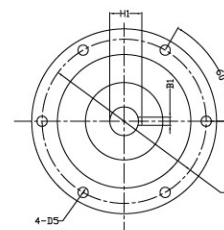


Model	D1	D2	H1	H2	H3	L1	L2	L3	L4	L5	L6	L7	L8	B1	N
	Output Shaft	Install screw hole	Base Thickness	Center Height	Key Height	Overall length	Overall Shaft Length	Pitch of Holes	Pitch of Holes	Base Length	Pitch of Holes	Base width	Shaft Length	Key Width	Inlet
M860WX-C163	25k6	11	15	100	28	404	35	66	90	120	180	210	34	8	G1/2
M860WX-C106															
M860WX-C089															
M860WX-C079															
M860WX-C067	35k6	15	20	140	38	438	55	95	100	150	250	290	45	10	
M860WX-C060	45k6	15	22	150	48.5	484	74	95	145	195	290	330	63	14	
M860WX-C054															
M860WX-C050	55k6	18	25	160	48.5	648	91	115	150	260	370	410	79	16	
M860WX-C047															
M860WX-C045	65m6	22	30	200	59	696	92	36	275	335	380	430	80	18	

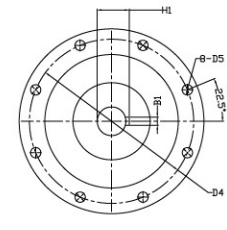
Dimension List – M860FX-C series vertical mounts



The vertical distribution of output flange mounting



M860FX-C Series other dimension



M860FX-C045

Model	D1	D2	D3	D4	D5	H1	L1	L2	L3	L4	L5	B1	N
	Output Shaft	DIA. Locating platform	DIA. Flange	DIA. Mounting platform	Install Screw hole	Key Height Center Distance	Overall length	Flange Thickness	Overall Shaft length	Shaft Length	Locating Platform Thickness	Key Width	Inlet
M860FX-C163	25k6	130	180	160	10	28	404	12	42	34	4	8	G1/2
M860FX-C106													
M860FX-C089													
M860FX-C079													
M860FX-C067	35k6	170	230	200	12	38	438	15	62	45	4	10	
M860FX-C060	45k6	200	260	230	15	48.5	484	15	79	63	4	14	
M860FX-C054													
M860FX-C050	55k6	270	340	310	6*Φ15	59	648	20	93	79	4	16	
M860FX-C047													
M860FX-C045	65m6	316	400	360	8*Φ15	69	696	20	94	80	5	18	