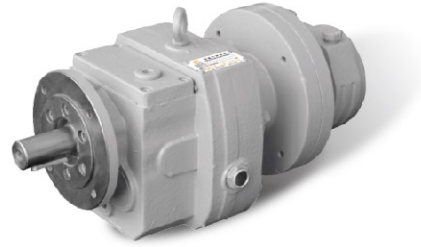


M860XX-B Series

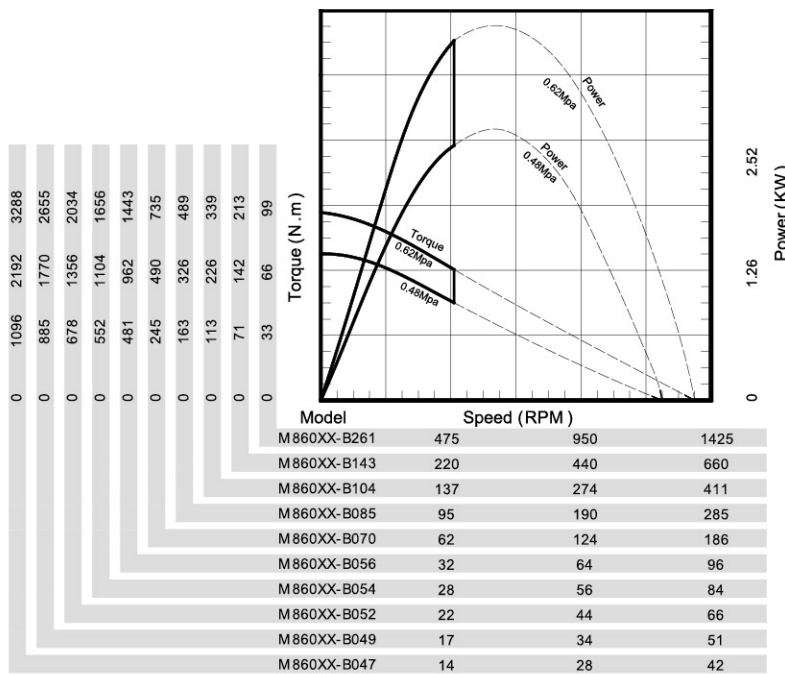
3.38KW/3.46KW



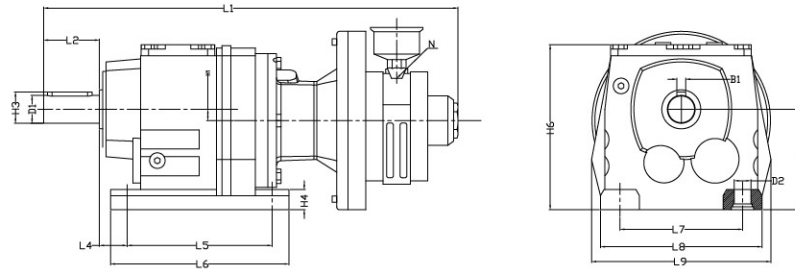
M860XX-B series specification

Model	Max Power (KW)	Speed at Max Power (RPM)	Free Speed (RPM)	Starting Torque(Nm)	Stall Torque (Nm)	Air Consumption (m³/m)	Weight(KG)
M860XX-B261	3.46	490	1372	67	93	4.3	23.2
M860XX-B143	3.46	227	635	144	201	4.3	23.2
M860XX-B104	3.46	141	396	231	323	4.3	23.2
M860XX-B085	3.46	98	275	332	464	4.3	23.2
M860XX-B070	3.38	64	179	500	698	4.3	28.2
M860XX-B056	3.38	33	91	981	1371	4.3	34.2
M860XX-B054	3.38	28	79	1127	1575	4.3	40.2
M860XX-B052	3.38	23	65	1383	1932	4.3	48.2
M860XX-B049	3.38	18	50	1805	2522	4.3	48.2
M860XX-B047	3.38	14	40	2236	3124	4.3	78.2

Performance Curves

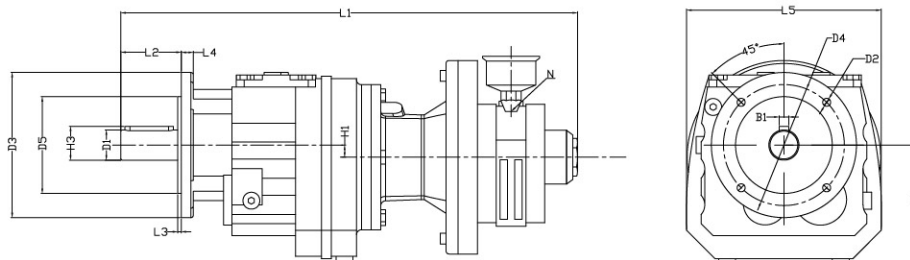


Dimension list - M640WX-B series horizontal mounts



Model	D1 Output Shaft	D2 Install screw hole	H1 Center Distance	H2 Center Height	H3 Key Height	H4 Base Thickness	H6 Flange Height	L1 Overall Length	L2 Shaft Length	L4 Holes	L5 Holes	L6 Base Length	L7 Holes	L8 Base width	L9 Total width	N Inlet	B1 Key Width
M860WX-B261	25	9	5	90	28	18	150	437	50	25	130	160	110	145	200	G1/2	8
M860WX-B143																	
M860WX-B104																	
M860WX-B085																	
M860WX-B070	30	13.5	15.5	115	33	24	190	472	60	30	165	195	135	170	200	10	
M860WX-B056	35	13.5	8.1	115	38	24	189	494	70	30	165	200	135	190	202		
M860WX-B054	35	17.5	19.5	130	38	30	215	517	70	30	195	235	150	210	220		
M860WX-B052	40	17.5	10	140	43	30	235	537	80	35	205	245	170	230	240	12	
M860WX-B049																	
M860WX-B047	50	17.5	17	180	53.5	45	300	609	100	40	260	310	215	290	305	14	

Dimension List –M640FX-B series vertical mounts



Model	D1 Output Shaft	D2 Install screw hole	D3 DIA. Flange	D4 DIA. Mounting platform	D5 DIA. Cover platform	H1 Center Distance	H2 Center Height	H3 Key Height	L1 Overall Length	L2 Shaft Length	L3 Platform Thickness	L4 Flange Thickness	L5 Overall Width	B1 Key Width	N Inlet
M860FX-B261	25	7	120	100	80	5	90	28	437	50	3	8	200	8	G1/2
M860FX-B143															
M860FX-B104															
M860FX-B085															
M860FX-B070	30	9	160	130	110	15.5	115	33	472	60	3.5	10	200	8	
M860FX-B056	35	11	200	165	130	8.1	115	38	494	70	3.5	12	202	10	
M860FX-B054	35	11	200	165	130	19.5	130	38	517	70	3.5	12	220	10	
M860FX-B052	40	13.5	250	215	180	10	140	43	537	80	4	15	240	12	
M860FX-B049															
M860FX-B047	50	13.5	300	265	230	17	180	53.5	609	100	4	16	305	14	